

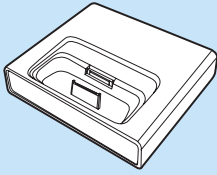
Quick Start Guide

- A** Install
- B** Connect
- C** Enjoy



PHILIPS

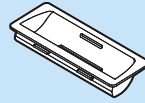
What's in the box



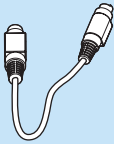
Docking cradle



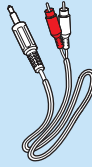
8 x iPod
dock adaptor



4 x GoGear
dock adaptors



DIN Cable



RCA Cable



Quick Start Guide

IMPORTANT!

- DC1000 is an iPod reader which transmits the signal from iPod to external speaker. It can be powered by power supply unit SA1460-240200 or SUPPLY APPARATUS FOR GENERAL USE, alternatively a special system having suitable supplying parameters through 9 pin DIN cable is available.
- For indoor use only.

What else you'll need

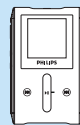


WACS7000



iPod

or



GoGear

IMPORTANT!

The docking cradle only supports the devices listed below. Do not try it on any other device!

- Apple iPod (iPod video, iPod nano, iPod Photo and iPod mini)
- Philips GoGear HDD players (Charge function optional)

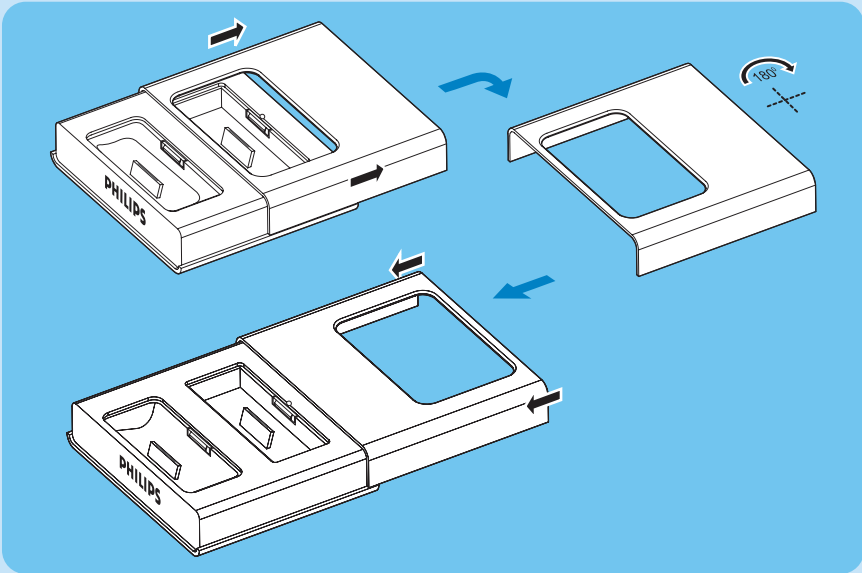
A₁

Install

I Change the docking cradle to match with your portable player

The docking cradle can support both iPod and GoGear. Follow steps below to change it into desired mode

- Default position is prepared for iPod
- Go to **A₂ Install** for iPod user.



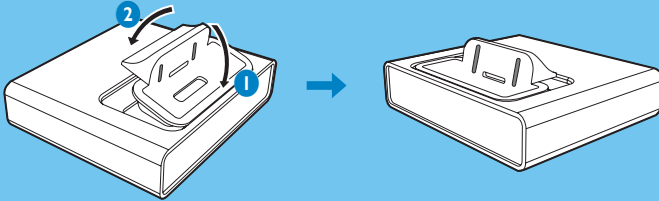
1. Slide the front cover horizontally in the direction shown above to open the front cover
2. Rotate the front cover in 180 degree
3. Slide the front cover back onto the docking cradle

A₂

Install

2 Install dock adaptor

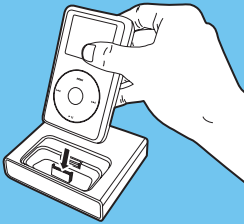
Insert a dock adaptor that matches with your portable player (take iPod adaptor as example).



3 Install portable player

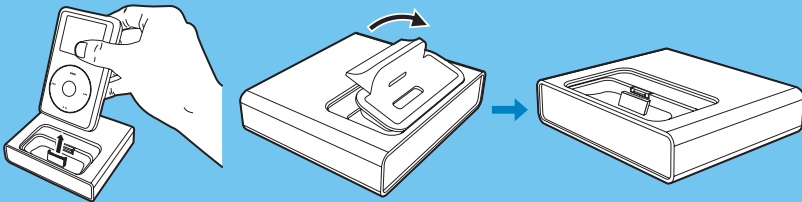
Plug your portable player into the cradle (take iPod as example).

– Turn on the power of pipe speakers.



Un-install

To connect with a different portable player, dismount the iPod first, then pop up the dock adaptor and then replace it with a new dock adaptor of the matching type.

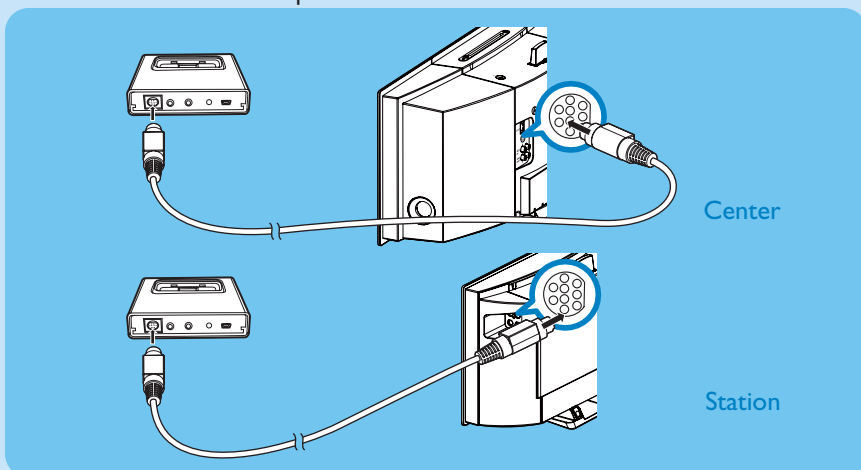


B

Connect

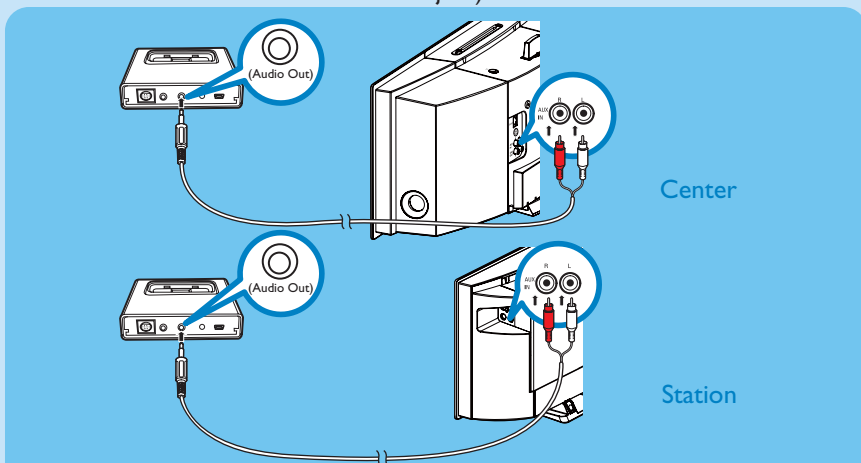
Connect AC power

The DC1000 is powered through WACS7000 by connect it with WACS7000 Center or Station via the 9 pin DIN cable.



Connect audio cable

Plug one end of the audio cable to the black 3.5mm Audio Out jack, and the other end to the audio in jacks on the WACS7000 Center or Station (note that the red terminal should be connected to the red jack).



Note: Adjust volume in case playing sound is low after connect your iPod or GoGear with WACS7000!



Enjoy

When connection is successfully made, power on the **WACS7000** Center or Station, then press **SOURCE** button to switch it to **AUX** mode, playing will start immediately. You can press the controls on your iPod or GoGear to skip/search for desired track or to stop playing.

Besides, you can also use the 2-way remote control that comes with **WACS7000** to enjoy your iPod or GoGear with **WACS7000**.

Activating the 2-way remote control

Press **PORTABLE** button

Using the 2-way remote control with the docking

Note: Only the Volume button, Skip/search button and **▶▶** button will be effective

Play

Press **▶▶** to start playing

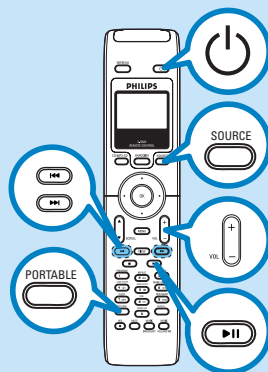
- While playing, press **▶▶** to stop playing temporarily. Press **▶▶** again to resume playing.

Adjust volume

Press **Volume +/-** to increase or reduce volume

Skip to the previous or next track

- Press **◀◀** to skip to the previous track
- Press **▶▶** to skip to the next track



De-activating the 2-way remote control

Press **SOURCE**, **HDD** or **CD** button on the 2-way remote control, the remote control will resume its function with **WACS7000** and will no longer be able to control the docking.



Enjoy

Charging iPod using the docking station

When the iPod is properly connected on the docking cradle and the WACS7000 is powered on, battery charging start automatically.

Helpful hint:

- You can also use a USB cable (not supplied) to connect the docking cradle with your PC to charge your iPod or GoGear

Troubleshooting

Problem

Solution

No sound

- Check if the audio cable is well connected.
- Check if the power cable that connects the DC1000 with WACS7000 is well connected.

No any response after pressed the buttons on the 2-way remote control

- Check if the 2-way remote control is at "**Portable**" mode. Press the **Portable** button to switch it to Portable mode.
- Point the remote control to the docking station.
- Once entering Portable mode, the 2-way remote control works with the DC1000. Do not point the remote control to WACS7000 or your iPod or GoGear.
- Check if the batteries of the remote control is used up. If yes, replace it with new batteries.
- Only the Volume button, Skip/search button and Play/pause button is applicable. (see **Enjoy** section for details.)

Sound can't be adjusted

- Check if the audio cable is properly connected: the audio cable should be connected to the black 3.5mm jack in the middle of the backside of the docking station.

Specifications

Dock Connectivity

- Audio Out : 3.5 mm (Cable provided)
- AV Out: 3.5 mm for Audio/Video Out (Cable optional)
- DC in for GoGear and iPod : 9 pins DIN cable(Cable provided)
- USB: Mini USB (Cable optional)
- Remote Control: IR build-in

Need help?
www.philips.com/support
 or
 call our helpdesk

Country	Helpdesk	Tariff / min	Keep ready
österreich	0820 901115	€0.20	Das Kaufdatum, Modellnummer und Seriennummer
Belgique	070 253 010	€0.17	La date d'achat la référence et le numéro de série du produit
Canada	1-800-661-6162 (Francophone) 1-888-744-5477 (English / Spanish)	Free	Date of Purchase, Model number and Serial number
Danmark	3525 8761	Local tariff	Forbrugeren's indkøbsdato, type/model-og serienummer
Suomi	09 2290 1908	Local tariff	Ostopäivä ja tarkka mallinnumero ja sarjanumero
France	08 9165 0006	€0.23	La date d'achat la référence et le numéro de série du produit
Deutschland	0180 5 007 532	€0.20	Das Kaufdatum, Modellnummer und Serial nummer
Ελλάδα	0 0800 3122 1223	Free	Την ημερομηνία αγοράς και τον ακριβή κωδικό μοντέλου και τον αριθμό σειράς του προϊόντος σας
Ireland	01 601 1161	Local tariff	Date of Purchase, Model number and Serial number
Italia	199 404 042	€0.21	La data di acquisto, numero di modello e numero di serie
Luxembourg	26 84 30 00	Local tariff	La data d'achat, la référence et le numéro de série du produit
Nederland	0900 0400 063	€0.20	De datum van aankoop, modelnummer en serienummer
Norge	2270 8250	Local tariff	Datoen da du kjøpte produktet & modellnummer & serienummeret
Portugal	2 1359 1440	Local tariff	A data de compra, número do modelo e número de série
España	902 888 785	€0.15	Fecha de compra e número del modelo e número de serie
Sweden	08 632 0016	Local tariff	Inköpsdatum, modellnummer och serienummer
Schweiz	02 2310 2116		Das Kaufdatum und Modellnummer und Seriennummer
UK	0906 1010 017	£0.15	Date of Purchase, Model number and Serial number
USA	1-888-744-5477	Free	Date of Purchase, Model number and Serial number



Specifications are subject to change without notice.
 Trademarks are the property of Koninklijke Philips Electronics N.V. or their respective owners.
 © Royal Philips Electronics N.V. 2006
 All rights reserved.

www.philips.com

Notes for iPod connection

1. The docking entertainment system is compatible with all the existing Apple iPod models with 30-pin connector.
2. Four adaptors are included to fit different iPod models including iPod touch (8GB, 16GB), iPod classic (80GB, 160GB), iPod nano 3rd generation (4GB, 8GB), iPod the 5th generation (30GB, 60GB, 80GB), iPod nano 2nd generation (2GB, 4GB, 8GB) and iPod nano 1st generation (1GB, 2GB, 4GB).

Remarques relatives à la connexion d'un iPod

1. La station d'accueil pour baladeur est compatible avec tous les modèles d'iPod Apple existants avec connecteur 30 broches.
2. Inclus: quatre adaptateurs pour les différents modèles d'iPod, notamment iPod touch (8 Go, 16 Go), iPod classic (80 Go, 160 Go), iPod nano 3ème génération (4 Go, 8 Go), iPod 5ème génération (30 Go, 60 Go, 80 Go), iPod nano 2ème génération (2 Go, 4 Go, 8 Go) et iPod nano 1ère génération (1 Go, 2 Go, 4 Go).

Notas acerca de la conexión del iPod

1. El sistema de base de entretenimiento es compatible con todos los modelos existentes de iPod de Apple que tengan conectores de 30 patillas.
2. Se incluyen cuatro adaptadores para que encajen los diferentes modelos de iPod, incluidos el iPod touch (8 GB, 16 GB), iPod classic (80 GB, 160 GB), iPod nano de tercera generación (4 GB, 8 GB), iPod de quinta generación (30 GB, 60 GB, 80 GB), iPod nano de segunda generación (2 GB, 4 GB, 8 GB) y iPod nano de primera generación (1 GB, 2 GB, 4 GB).

Hinweise zur iPod-Verbindung

1. Das Docking-Entertainment-System ist mit allen im Handel erhältlichen Apple iPod-Modellen mit 30-pin-Anschluss kompatibel.
2. Es sind vier Adapter für verschiedene iPod-Modelle enthalten, z. B. für iPod touch (8 GB, 16 GB), iPod classic (80 GB, 160 GB), iPod nano der 3. Generation (4 GB, 8 GB), iPod der 5. Generation (30 GB, 60 GB, 80 GB), iPod nano der 2. Generation (2 GB, 4 GB, 8 GB) und iPod nano der 1. Generation (1 GB, 2 GB, 4 GB).

Opmerkingen over het aansluiten van een iPod

1. Het basissetentertainmentssysteem is compatibel met alle bestaande Apple iPod-modellen met een 30-pins-aansluiting.
2. Er zijn vier adapters beschikbaar voor verschillende iPod-modellen waaronder iPod Touch (8 GB, 16 GB), iPod Classic (80 GB, 160 GB), iPod Nano 3rd generation (4 GB, 8 GB), iPod 5th generation (30 GB, 60 GB, 80 GB), iPod Nano 2nd generation (2 GB, 4 GB, 8 GB) en iPod Nano 1st generation (1 GB, 2 GB, 4 GB).

Note per la connessione iPod

1. Il sistema docking di intrattenimento è compatibile con tutti i modelli Apple iPod in commercio dotati di connettore a 30 pin.
2. Nella confezione sono inclusi quattro adattatori diversi per i vari modelli iPod, tra i quali: iPod touch (8 GB, 16 GB), iPod classic (80 GB, 160 GB), iPod nano terza generazione (4 GB, 8 GB), iPod di quinta generazione (30 GB, 60 GB, 80 GB), iPod nano di seconda generazione (2 GB, 4 GB, 8 GB) e iPod nano di prima generazione (1 GB, 2 GB, 4 GB).

Information för iPod-anslutning

1. Dockningsunderhållningssystemet är kompatibelt med alla befintliga Apple iPod-modeller med 30-stiftskontakt.
2. Fyra adapttrar som passar olika iPod-modeller medföljer: iPod touch (8 GB, 16 GB), iPod classic (80 GB, 160 GB), iPod nano 3rd generation (4 GB, 8 GB), iPod 5th generation (30 GB, 60 GB, 80 GB), iPod nano 2nd generation (2 GB, 4 GB, 8 GB) och iPod nano 1st generation (1 GB, 2 GB, 4 GB).

Bemærkninger om tilslutning af iPod

1. Dockingunderholdningssystemet er kompatibelt med alle eksisterende modeller af Apple iPod med 30-bens stik.
2. Der medfølger fire adaptere til brug med forskellige iPod-modeller, herunder iPod touch (8 GB, 16 GB), iPod classic (80 GB, 160 GB), iPod nano 3. generation (4 GB, 8 GB), iPod 5. generation (30 GB, 60 GB, 80 GB), iPod nano 2. generation (2 GB, 4 GB, 8 GB) og iPod nano 1. generation (1 GB, 2 GB, 4 GB).

Huomautuksia iPod-liitäntöistä

1. Telakointiasema on yhteensopiva kaikkien sellaisten Apple iPod -mallien kanssa, joissa on 30-nastainen telakointisovitin.
2. Saatavana on neljä erilaista sovitinta seuraaville iPod-malleille: iPod touch (8 Gt, 16 Gt), iPod classic (80 Gt, 160 Gt), iPod nano, 3. sukupolvi (4 Gt, 8 Gt), iPod, 5. sukupolvi (30 Gt, 60 Gt, 80 Gt), iPod nano, 2. sukupolvi (2 Gt, 4 Gt, 8 Gt) ja iPod nano, 1. sukupolvi (1 Gt, 2 Gt, 4 Gt).

Notas para a ligação do iPod

1. O sistema de entretenimento de acoplamento é compatível com todos os modelos de Apple iPod existentes com um conector de 30 pinos.
2. São incluídos 4 adaptadores para se adaptarem aos diferentes modelos de iPod touch (8GB, 16GB), iPod classic (80GB, 160GB), iPod nano 3ª geração (4GB, 8GB), iPod 5ª geração (30GB, 60GB, 80GB), iPod nano 2ª geração (2GB, 4GB, 8GB) e iPod nano 1ª geração (1GB, 2GB, 4GB).

Σημειώσεις για σύνδεση iPod

1. Το σύστημα ψυχαγωγίας με σύνδεση είναι συμβατό με όλα τα υφιστάμενα μοντέλα Apple iPod με υποδοχή 30 ακροδεκτών.
2. Περιλαμβάνονται τέσσερις προσαρμογείς βάσης για εφαρμογή σε διάφορα μοντέλα iPod, συμπεριλαμβανομένων των iPod touch (8GB, 16GB), iPod classic (80GB, 160GB), iPod nano 3ης γενιάς (4GB, 8GB), iPod 5ης γενιάς (30GB, 60GB, 80GB), iPod nano 2ης γενιάς (2GB, 4GB, 8GB) και iPod nano 1ης γενιάς (1GB, 2GB, 4GB).

Замечания по подключению iPod

1. Док-станция системы развлечений совместима со всеми существующими моделями Apple iPod с 30-контактным разъемом.
2. В комплект входят четыре адаптера, подходящие для различных моделей iPod, включая iPod Touch (8GB, 16GB), iPod Classic (80GB, 160GB), iPod Nano 3-го поколения (4GB, 8GB), iPod 5-го поколения (30GB, 60GB, 80GB), iPod Nano 2-го поколения (2GB, 4GB, 8GB) и iPod Nano 1-го поколения (1GB, 2GB, 4GB).

Uwagi dotyczące połączenia odtwarzacza iPod

1. Zestaw audiowizualny ze stacją dokującą jest zgodny ze wszystkimi istniejącymi modelami odtwarzacza Apple iPod ze złączem 30-stykowym.
2. W zestawie znajdują się cztery adaptery pasujące do różnych modeli odtwarzaczy iPod, takich jak iPod Touch (8 GB, 16 GB), iPod Classic (80 GB, 160 GB), iPod Nano 3G (4 GB, 8 GB), iPod 5G (30 GB, 60 GB, 80 GB), iPod Nano 2G (2 GB, 4 GB, 8 GB) oraz iPod Nano 1G (1 GB, 2 GB, 4 GB).

Poznámky pro připojení přístroje iPod

1. Dokovací systém zábavy je kompatibilní se všemi existujícími modely zařízení Apple iPod se 30pinovým konektorem.
2. Jsou dodávány 4 různé typy adaptérů, které jsou vhodné pro různá zařízení iPod, včetně zařízení iPod touch (8GB, 16GB), iPod classic (80GB, 160GB), iPod nano 3. generace (4GB, 8GB), iPod 5. generace (30GB, 60GB, 80GB), iPod nano 2. generace (2GB, 4GB, 8GB) a iPod nano 1. generace (1GB, 2GB, 4GB).

Upozornenia pre pripojenie prehrávača iPod

1. Dokovací zábavný systém je kompatibilný so všetkými existujúcimi modelmi prehrávačov Apple iPod s 30-pinovým konektorom.
2. Balenie obsahuje štyri adaptéry na pripojenie rôznych modelov prehrávača iPod vrátane modelu iPod touch (8 GB, 16 GB), iPod classic (80 GB, 160 GB), iPod nano 3. generácie (4 GB, 8 GB), iPod 5. generácie (30 GB, 60 GB, 80 GB), iPod nano 2. generácie (2 GB, 4 GB, 8 GB) a modelu iPod nano 1. generácie (1 GB, 2 GB, 4 GB).

Megjegyzések iPod készülék csatlakoztatásához

1. A dokkolós szórakoztatórendszer kompatibilis minden létező, 30 érintkezős csatlakozóval rendelkező Apple iPod modellel.
2. A különböző iPod modellekhez (mint az iPod touch 8 GB, 16 GB, iPod classic 80 GB, 160 GB, 3. generációs iPod nano 4 GB, 8 GB, 5. generációs iPod 30 GB, 60 GB, 80 GB, 2. generációs iPod nano 2 GB, 4 GB, 8 GB és 1. generációs iPod nano 1 GB, 2 GB, 4 GB) négy adaptert mellékelünk.