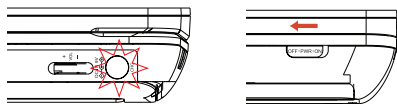


Quick start guide

1 Charge your battery

This portable DVD player is designed with a built-in lithium battery to supply power to the player when you are on travel.

- Slide the **POWER** switch to the **OFF** position (charging of the DVD player only possible in the power-off mode).

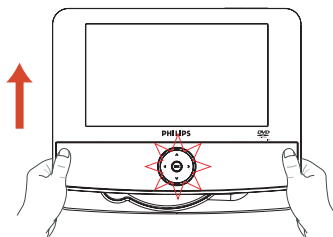


- Connect the supplied power adaptor cord (or the car adaptor) to the player and AC mains (or the car cigarette lighter outlet) to start charging.
 - The **CHG** indicator turns red.
 - When the battery is fully charged, the indicator turns off.
- Disconnect the power adaptor cord (or the car adaptor) when the CHG indicator turns off.

Notes:

– You can also connect the supplied power adaptor cord (or the car adaptor) to the player and AC mains (or the car cigarette lighter outlet) directly wherever possible.

2 Enjoy (Disc operation)



- Slide the **POWER** switch to **ON** to switch on the DVD player.
 - The **POWER** indicator turns on.
- Gently push the front panel as shown to open the disc compartment.
- Remove the protective card (if any) and load a disc with the label side facing up.
- Pull the front panel back to close the disc compartment. Playback will start automatically. If not, press **▶|L**.
- To stop playback, press **■**.

Note:

– Once the battery is fully discharged, immediately recharge it (regardless of whether you plan to use the battery or not) in order to maximize the battery life. When the power is low, the battery icon will be shown on the upper-left corner of the TFT for warning.

2 Enjoy (AV OUT)

Connecting additional equipment (TV for example)

- Connect the AV OUT socket on the set to the video and audio sockets on a TV as shown directly.
- Switch on the TV and set to the correct video-in channel.
 - You can consult the owner's manual of your TV. (If your TV does not have Audio and Video inputs, you will need to purchase a RF modulator. Please consult your dealer.)

