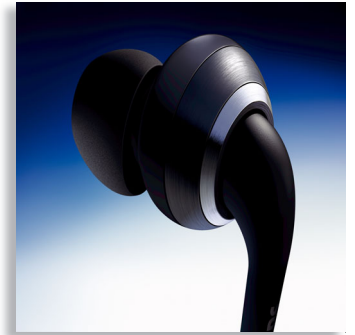




Philips
In-Ear Headphones



SHE9800

Advanced acoustics

Deep, powerful, sound stage

For an ultra-wide sound stage with deep and powerful acoustics, Philips SHE 9800 headphones are the perfect solution. Precisely tuned 13.5 mm driver units and an Angled Acoustic design ensure superb sound reproduction with stunning clarity.

Enjoy quality sound

- Sound stage enhancer designed for spacious sound experience
- Powerful microdrivers deliver the widest frequency range
- Philips iLab acoustic tuning yields deep and powerful sound
- Angled Acoustics design provides exceptional noise isolation

Ultimate wearing comfort

- Ergonomic Angled Acoustic design ensures a natural fit
- 3 sizes of ultra-soft silicon caps ensure an ideal fit

Always ready to go

- Durable carrying pouch includes a cable management solution.
- Symmetrical cables come in equal lengths to avoid tangle
- Durable Flexi-Grip makes a strong flexible connection



PHILIPS
sense and simplicity

Specifications

Sound

- Impedance: 16 ohm at 1kHz
- Sensitivity: 106 dB
- Maximum power input: 50mW
- Diaphragm: Mylar dome
- Frequency response: 12- 22k Hz
- Type: Dynamic

Connectivity

- Cable length: 1.2m

Inner Carton

- EAN: 87 12581 42467 1
- Number of consumer packagings: 3
- Gross weight: 1.06 kg
- Inner carton (L x W x H): 18.4 x 13.2 x 21.3 cm
- Nett weight: 0.042 kg
- Tare weight: 1.018 kg

Outer Carton

- EAN: 87 12581 42466 4
- Number of consumer packagings: 24
- Gross weight: 9.429 kg
- Outer carton (L x W x H): 38.8 x 28.6 x 45.8 cm
- Nett weight: 0.336 kg
- Tare weight: 9.093 kg

Packaging dimensions

- EAN: 87 12581 35708 5
- Number of products included: 1
- Packaging type: Blister
- Packaging dimensions (W x H x D): 17.5 x 17.5 x 4.1 cm
- Gross weight: 0.2952 kg
- Nett weight: 0.014 kg
- Tare weight: 0.2812 kg

Product highlights

Sound stage enhancer design

The sound stage enhancer design modifies the conventional headphone structure to complement the powerful microdrivers in producing a wider sound stage effect.

Deliver wide frequency range

Specifically designed microdrivers produce extra deep bass and wider dynamic range to unleash the full potential of your Ipod nano.

Philips iLab acoustic tuning

Meticulously tuned by Philips' state-of-the-art iLab expertise, the wide band sound stage from these headphones make for an unforgettable listening experience. The underlying iLab technology ensures greater output from lower frequencies and helps to create a more balanced and accurate sound than that offered by traditional earphones.

Angled acoustic design

Derived from a thorough understanding of the anatomy of a human ear canal, the Angled Acoustic design adjusts the angle of the speaker tube and ear bud to individual ear canal shapes. Besides delivering sound directly to your ears, it also creates a perfect seal from ambient noise that enables you to listen to your music at lower volume levels.

Ear fitting design

The design superiority of a slight 15-degree tilt in the Angled Acoustic model based on the anatomy of the human ear achieves a natural fit and supreme comfort.

3-size ultra-soft silicon cap

Available in three different sizes (small, medium and large), the interchangeable ear caps ensure a personalized fit to each individual user. They are also made from ultra-soft silicon to provide the utmost comfort for prolonged listening.

Durable carrying pouch

Made of a durable material, the sleek carrying case incorporates a cable bank which provides an easy solution for neat cable winding and headphone storage. It also provides additional protection for the headphones while not in use.

Symmetrical cables

These headphones have symmetrical cables to prevent them from tangling, and hence provide for easy listening.

Flexi-grip design

The soft flexi-grip material that the body of the headphone is sheathed in enhances its performance and extends its durability. It protects the cable connection from damage that otherwise could occur due to repeated bending of the headphone body from frequent contact with the user's fingertips when being put on and removed.



Issue date 2009-02-03

Version: 5.0.11

12 NC: 8670 000 33059
EAN: 87 12581 35708 5

© 2009 Koninklijke Philips Electronics N.V.
All Rights reserved.

Specifications are subject to change without notice.
Trademarks are the property of Koninklijke Philips
Electronics N.V. or their respective owners.

www.philips.com