

1 How to use this guide

The purpose of this Quick Start Guide is to assist you in getting this Philips Commercial television installed as quickly as possible. It contains the necessary information needed for most typical connections and installations. For detailed documentation of additional features, please consult the user manual or online help at www.philips.com/hospitality.

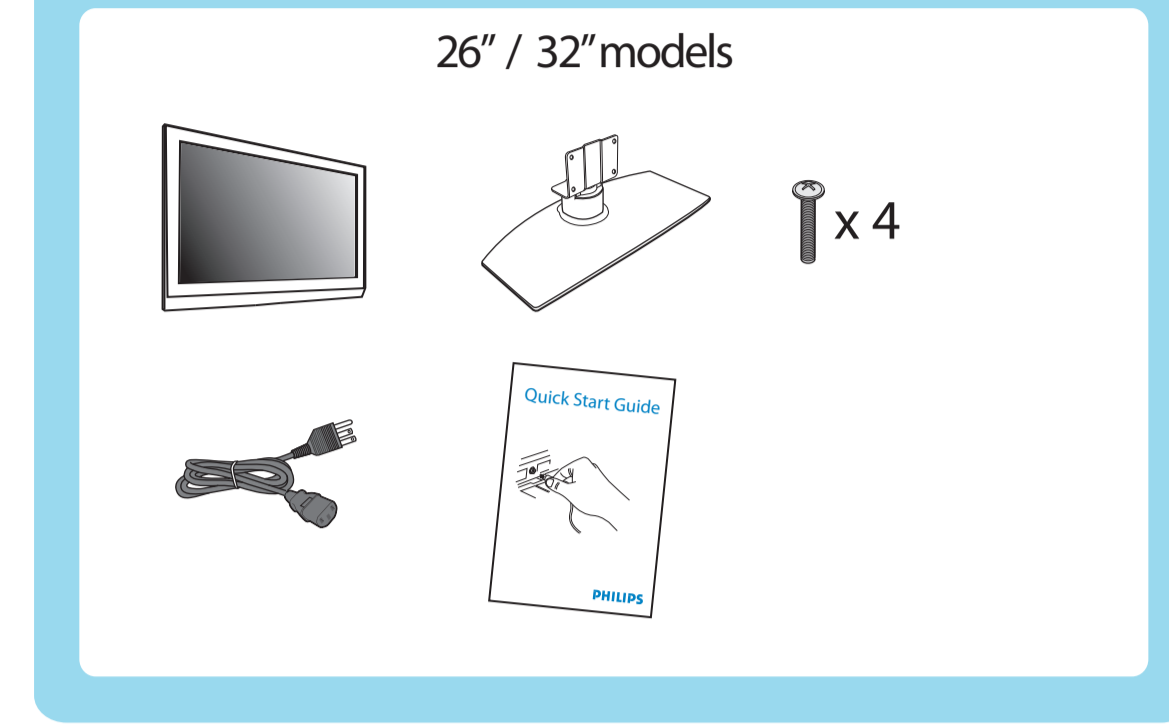
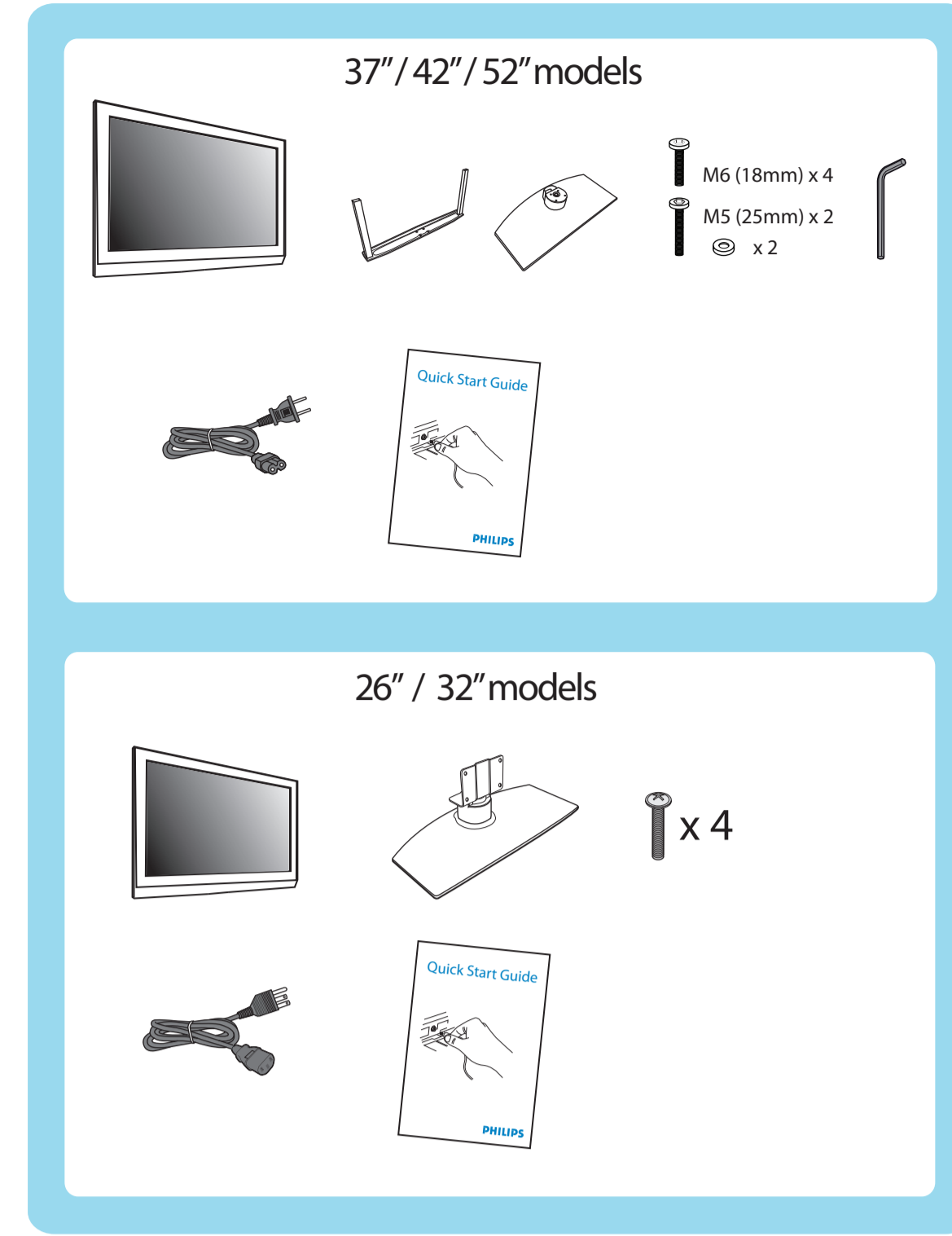
Go through this Quick Start Guide and read the instructions on:

How to:

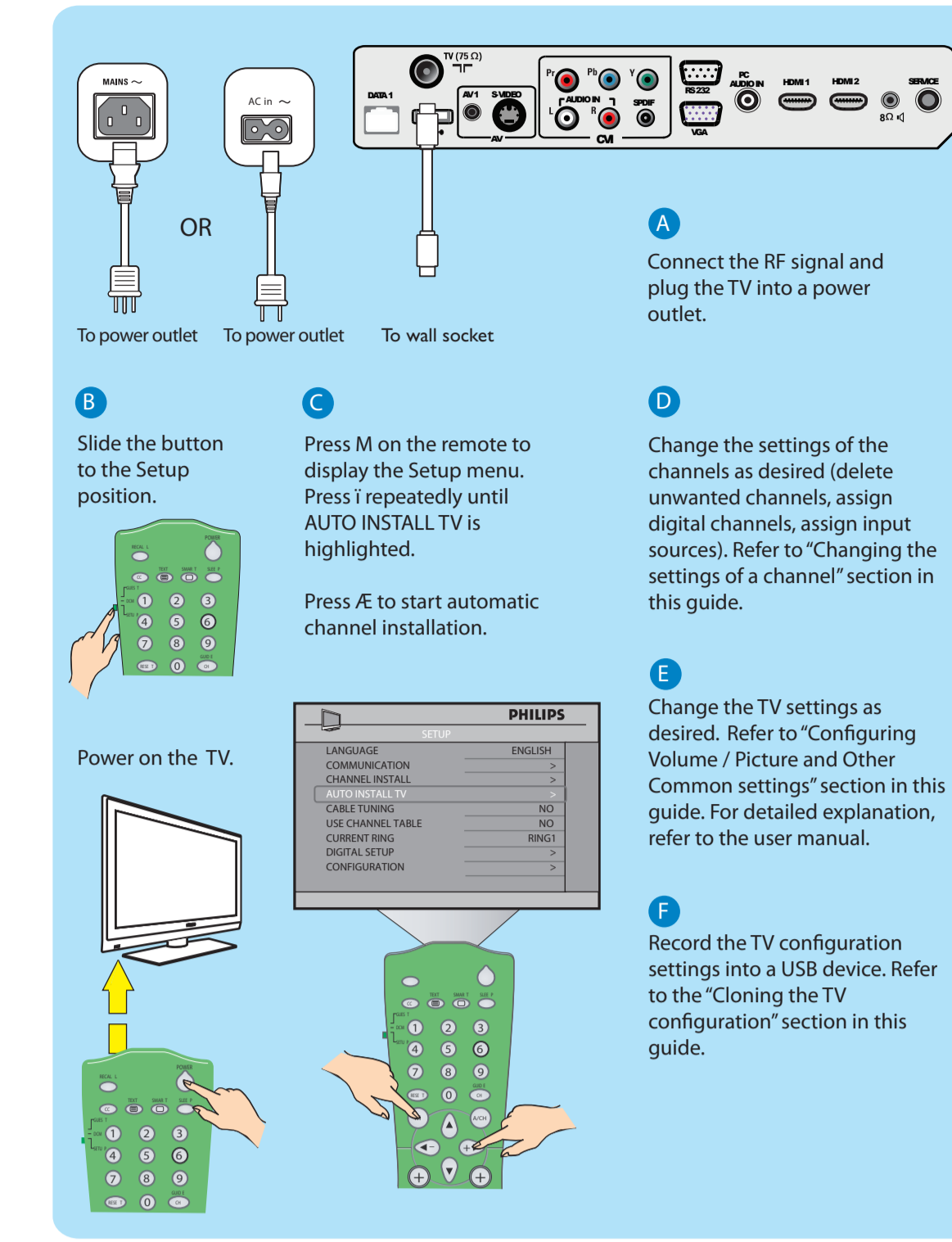
- perform a Stand alone installation
- change the settings of a channel
- configure the Volume / Picture and other common settings
- clone the TV configuration to a USB device and from the USB device to the TV
- install a Pay-Per-View SmartCard
- install a Pay-Per-View Box
- diagnose basic problems

The complete directions for use can be downloaded from the Philips Professional & Business Solutions website (www.philips.com/hospitality) by selecting the Hospitality Products link and then the model of the TV.

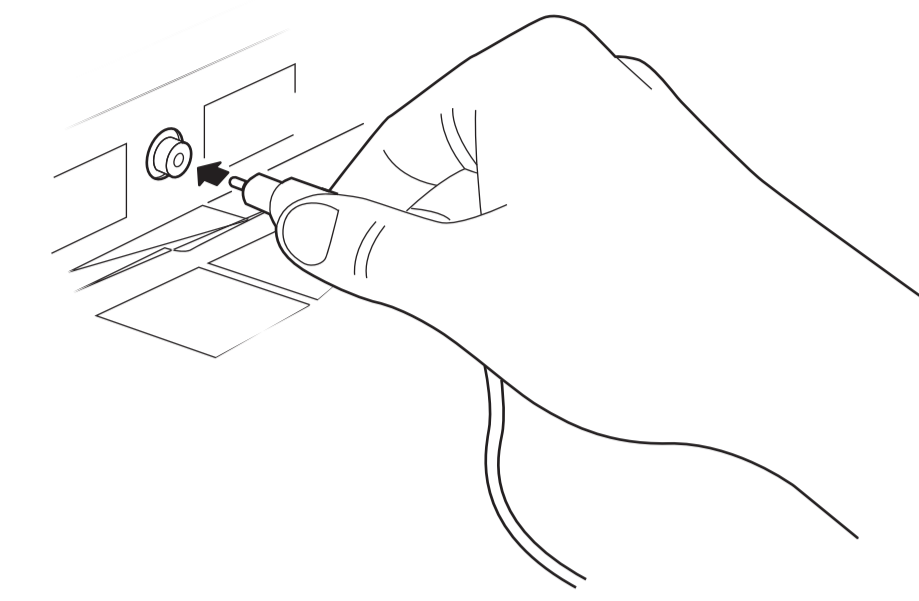
2 What you can find in the box



3 Stand alone installation



Quick Start Guide

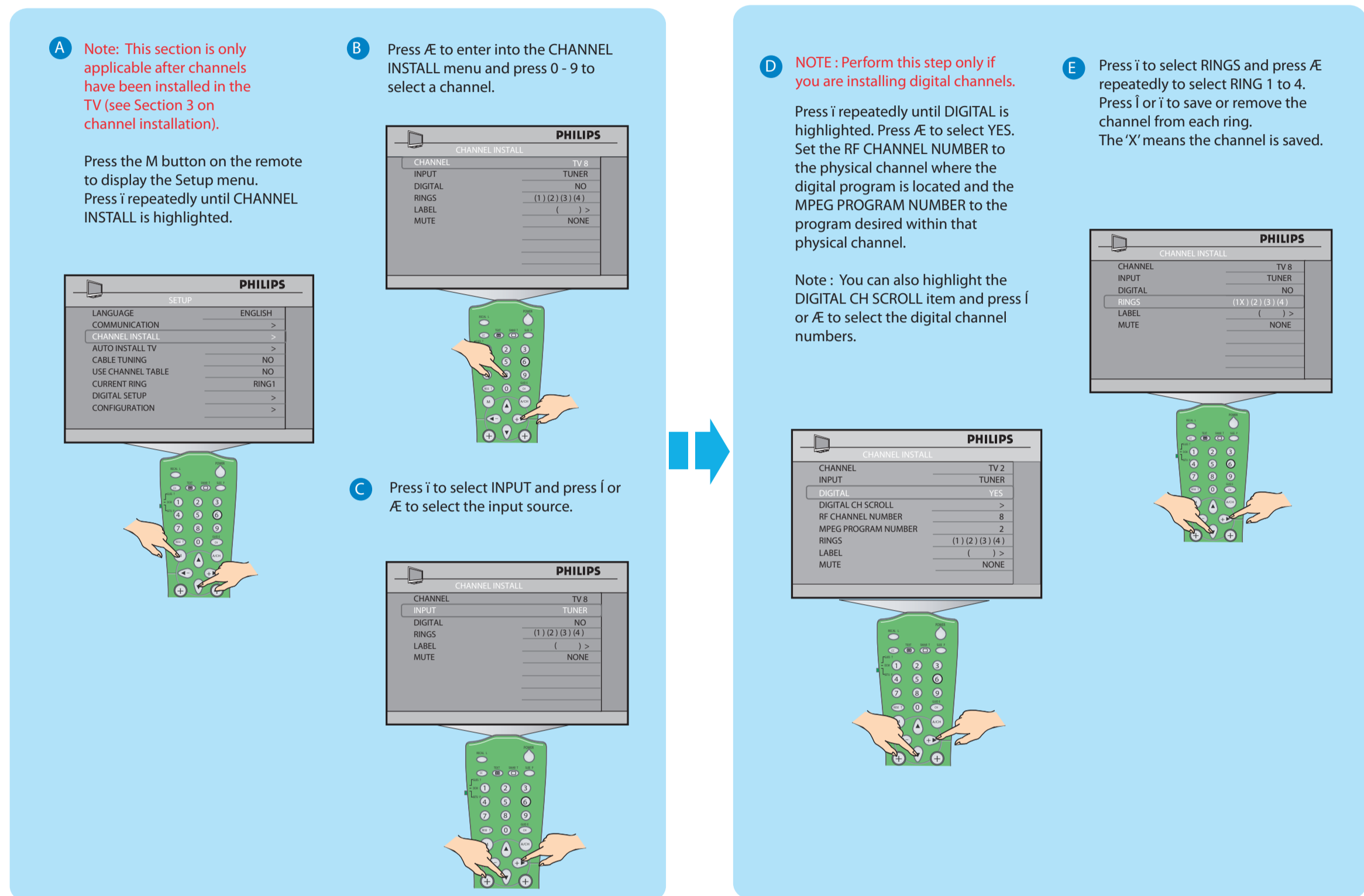


PHILIPS

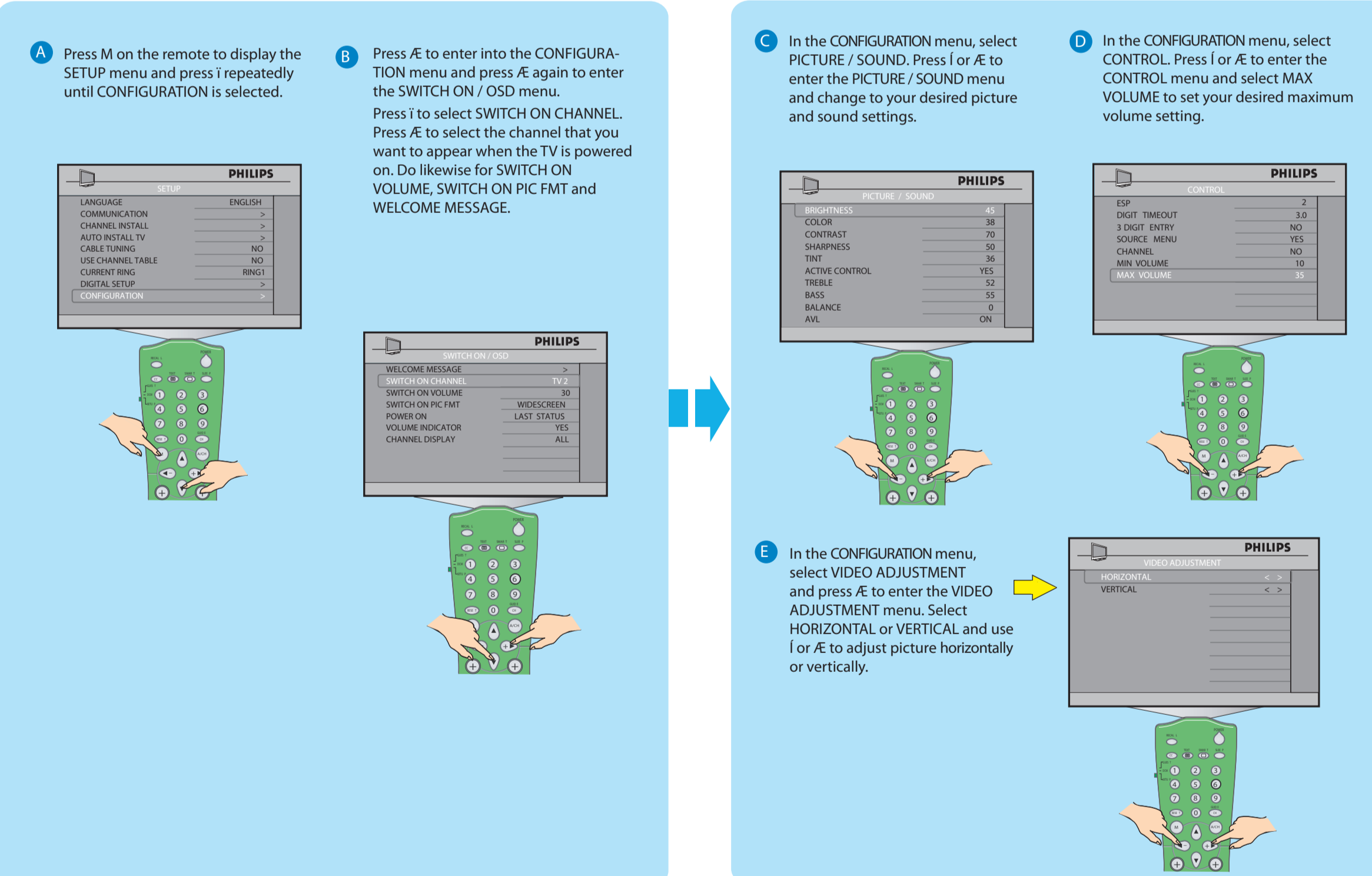
© 2008 Koninklijke Philips N.V.
All rights reserved.
Document order number: 319 28 20011



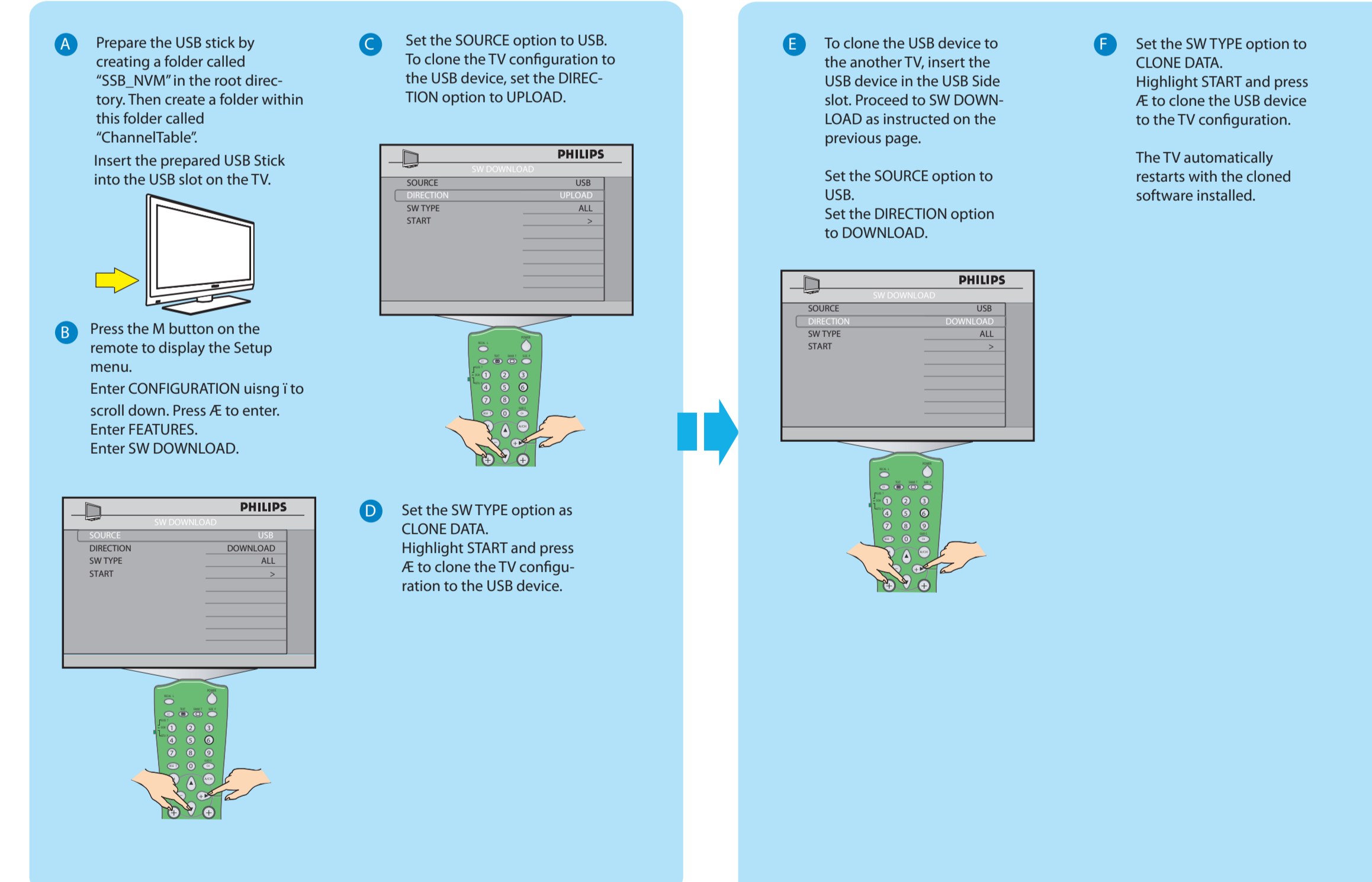
4 Changing the settings of a channel



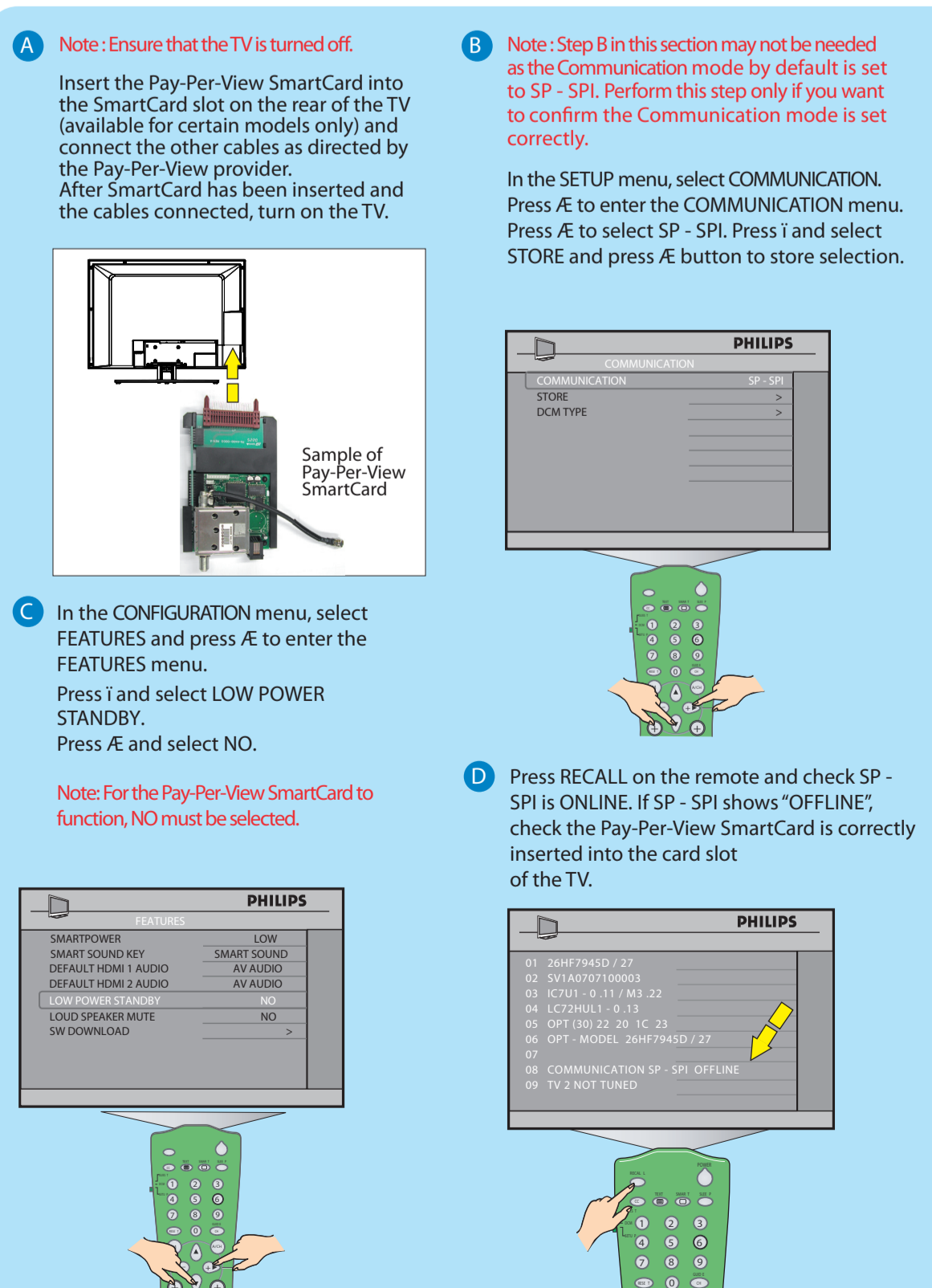
5 Configuring the Volume / Picture and Other Common settings



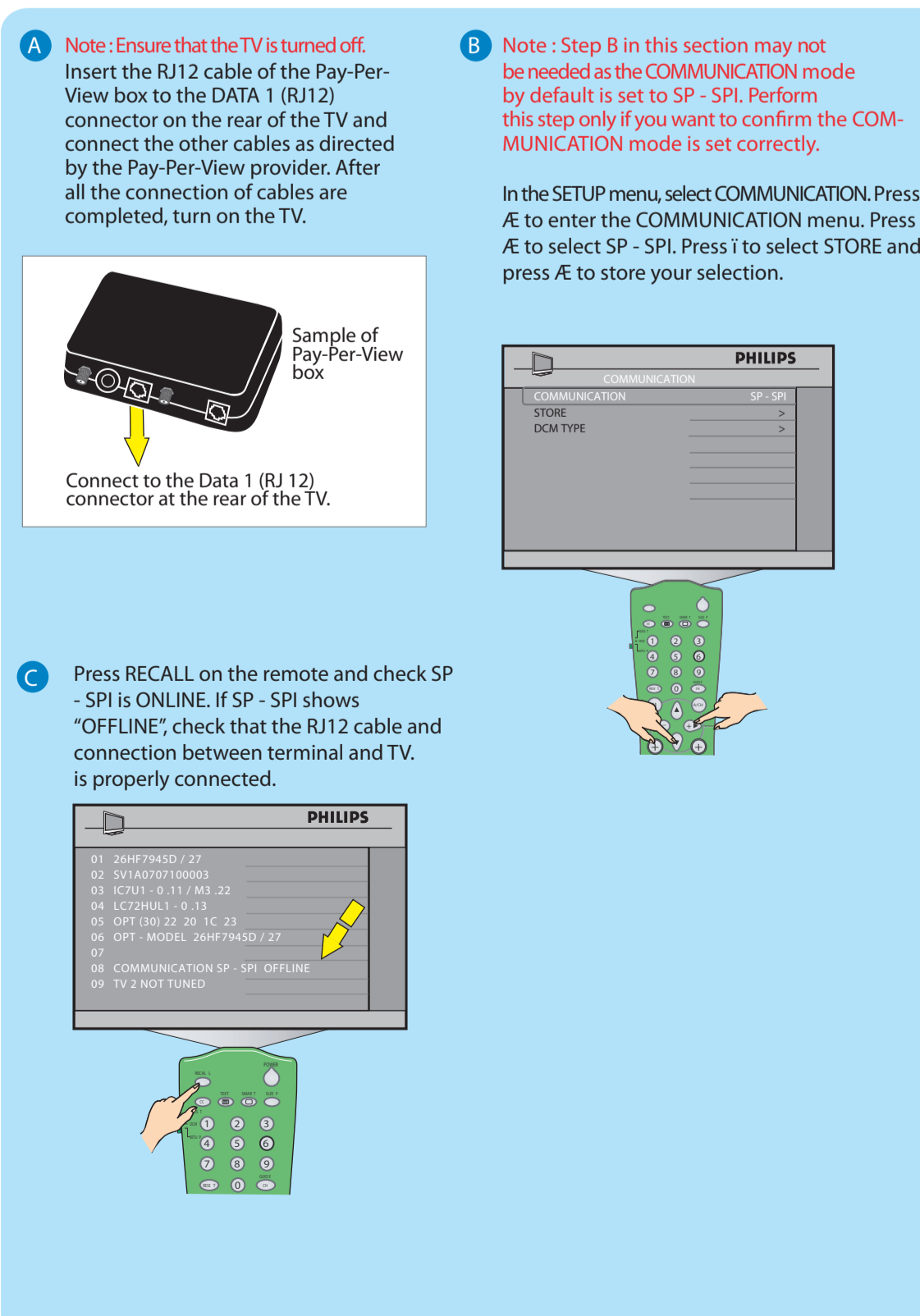
6 Cloning the TV configuration to a USB Device and the USB Device configuration to the TV



7 Installing a Pay-Per-View SmartCard



8 Installing a Pay-Per-View Box



9 Diagnosing Basic Problems

