



Philips Brilliance
32:9 SuperWide curved
LCD display

P Line

49 (48.8" / 124 cm diag.)
5120 x 1440 (Dual QHD)

Brilliance

498P9Z

Wide open possibilities

with two high-performance monitors in one

Our award-winning 49" SuperWide display is like two full-size high performance monitors in-one. DisplayHDR 400 display with 165Hz and Adaptive-Sync technology offers the smoothest experience, no matter entertainment or design creation.

Expand your horizons

- 32:9 SuperWide screen designed to replace multiscreen setups
- MultiView enables simultaneous dual connect and view
- 1800r curved display for a more immersive experience
- Effortlessly smooth action with Adaptive-Sync technology
- DisplayHDR 400 for more lifelike colorful visuals

Designed for the way you work

- Built-in KVM switch to easily switch between sources
- Less eye fatigue with Flicker-free technology
- LowBlue Mode for easy on-the-eyes productivity
- Tilt, swivel and height-adjust for an ideal viewing position
- 165Hz refresh rates for ultra-smooth, brilliant images



reddot award 2018
winner

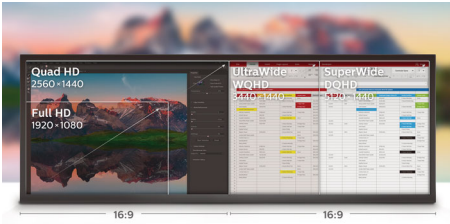
PHILIPS

32:9 SuperWide curved LCD display
P Line 49 (48.8" / 124 cm diag.), 5120 x 1440 (Dual QHD)

498P9Z/61

Highlights

32:9 SuperWide



32:9 SuperWide 49" screen, with 5120 x 1440 resolution, is designed to replace multiscreen setups for massive wide view. It's like having two 27" 16:9 Quad HD displays side-by-side. SuperWide monitors offer screen area of dual monitors without the complicated setup.

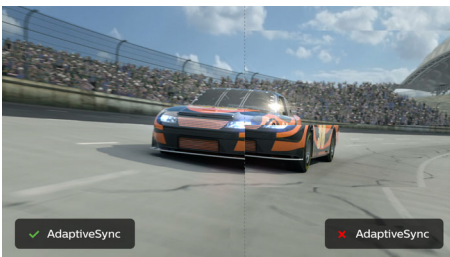
MultiView technology

With the ultra-high resolution Philips MultiView display you can now experience a world of connectivity. MultiView enables active dual connect and view so that you can work with multiple devices like a PC and notebook simultaneously, for complex multi-tasking.

1800r Curved display

Innovative curved display offers less image distortion, a wider field of view, reduced glare, and more comfort for eyes.

Adaptive-Sync technology



Gaming shouldn't be a choice between choppy gameplay or broken frames. Get fluid, artifact-free performance at virtually any framerate with Adaptive-Sync technology, smooth quick refresh and ultra-fast response time.

DisplayHDR 400



VESA-certified DisplayHDR 400 delivers a significant step-up from normal SDR displays. Unlike, other 'HDR compatible' screens, true DisplayHDR 400 produces astonishing brightness, contrast and colors. With global dimming and peak brightness up-to 400 nits, images come to life with notable highlights while featuring deeper, more nuanced blacks. It renders a fuller palette of rich new colors, delivering a visual experience that engages your senses.

MultiClient Integrated KVM



With MultiClient Integrated KVM switch, you can control two separate PCs with one monitor-keyboard-mouse set up. A convenient button allows you to quickly switch between sources. Handy with set-ups that require dual PC computing power or sharing one large monitor to show two different PCs.

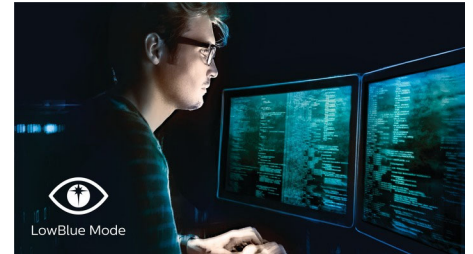
Flicker-free technology



Due to the way brightness is controlled on LED-backlit screens, some users experience

flicker on their screen which causes eye fatigue. Philips Flicker-free Technology applies a new solution to regulate brightness and reduce flicker for more comfortable viewing.

LowBlue Mode



Studies have shown that just as ultra-violet rays can cause eye damage, shortwave length blue light rays from LED displays can cause eye damage and affect vision over time. Developed for wellbeing, Philips LowBlue Mode setting uses a smart software technology to reduce harmful shortwave blue light.



iF Design

iF DESIGN AWARD is a seal of quality for exceptional design, also a symbol that consumers can trust.

Philips Brilliance 49" SuperWide Curved Monitor, offers the ultimate in picture fidelity, screen format and maximizes user functionality



reddot award 2018 winner

Red Dot

Red Dot stands for belonging to the best in design and business.

The task of placing this large screen on a stand with a similar presence is met in an exemplary manner. The result is a monitor appearing as an artistic entity



Specifications

Picture/Display

- LCD panel type: VA LCD
- Backlight type: W-LED system
- Panel Size: 48.8 inch / 124 cm
- Display Screen Coating: Anti-Glare, 3H, Haze 25%
- Effective viewing area: 1191.936 (H) x 335.232 (V) mm at a 1800R curvature*
- Aspect ratio: 32:9
- Maximum resolution: HDMI: 5120 x 1440 @ 75 Hz; DP: 5120 x 1440 @ 165 Hz*
- Pixel Density: 109 PPI
- Response time (typical): 4 ms (Gray to Gray)*
- Brightness: 550 cd/m²
- Contrast ratio (typical): 3000:1
- SmartContrast: 80,000,000:1
- Pixel pitch: 0.233 x 0.233 mm
- Viewing angle: 178° (H) / 178° (V), @ C/R > 10
- Flicker-free
- Picture enhancement: SmartImage
- Display colors: 16.7 M
- Color gamut (min.): DCI-P3 91%*
- Color gamut (typical): NTSC 100%*, sRGB 122%*, Adobe RGB 89%*
- HDR: DisplayHDR 400 certified
- Scanning Frequency: HDMI: 30 - 200 kHz (H) / 48 - 120 Hz (V); DP: 30 - 250 kHz (H) / 48 - 165 Hz (V)
- SmartUniformity: 93 ~ 105%
- Delta E: < 2
- sRGB
- LowBlue Mode
- EasyRead
- Adaptive sync

Connectivity

- Signal Input: DisplayPort 1.4 x 1, HDMI 2.0 x 3
- HDCP: HDCP 2.2 (HDMI / DP)
- USB: USB 3.2 x 2 (upstream), USB 3.2 x 4 (downstream with x 1 fast charge B.C 1.2)
- Sync Input: Separate Sync
- Audio (In/Out): Audio out

Convenience

- Built-in Speakers: 5 W x 2
- MultiView: PBP (2x devices)
- KVM
- User convenience: SmartImage, Input, User, Menu, Power On/Off
- Control software: SmartControl
- OSD Languages: Brazil Portuguese, Czech, Dutch, English, Finnish, French, German, Greek, Hungarian, Italian, Japanese, Korean, Polish, Portuguese, Russian, Simplified Chinese, Spanish, Swedish, Traditional Chinese, Turkish, Ukrainian
- Other convenience: Kensington lock, VESA mount (100x100mm)
- Plug & Play Compatibility: DDC/CI, Mac OS X,

sRGB, Windows 10 / 8.1 / 8 / 7

Stand

- Height adjustment: 130 mm
- Swivel: -/+ 20 degree
- Tilt: -5~15 degree

Power

- ECO mode: 46.2 W (typ.)
- On mode: 51.4 W (typ.) (EnergyStar test method)
- Standby mode: 0.4 W (typ.)
- Off mode: Zero watts with Zero switch
- Power LED indicator: Operation - White, Standby mode- White (blinking)
- Power supply: Built-in, 100-240VAC, 50-60Hz

Dimensions

- Product with stand(max height): 1194 x 568 x 303 mm
- Product without stand (mm): 1194 x 369 x 156 mm
- Packaging in mm (WxHxD): 1308 x 384 x 553 mm

Weight

- Product with stand (kg): 15.20 kg
- Product without stand (kg): 10.90 kg
- Product with packaging (kg): 21.50 kg

Operating conditions

- Temperature range (operation): 0°C to 40°C °C
- Temperature range (storage): -20°C to 60°C °C
- Relative humidity: 20%-80 %
- Altitude: Operation: +12,000ft (3,658m), Non-operation: +40,000ft (12,192m)
- MTBF (demonstrated): 70,000 hrs (excluded backlight)

Sustainability

- Environmental and energy: EnergyStar 8.0, EPEAT*, TCO Certified, RoHS
- Recyclable packaging material: 100 %
- Post consumer recycled plastic: 35%
- Specific Substances: PVC / BFR free housing, Mercury free

Compliance and standards

- Regulatory Approvals: cETLus, CB, TUV/GS, TUV Ergo, SEMKO, CU-EAC, EAEU RoHS, KC, KCC, CE Mark, FCC Class B, ICES-003

Cabinet

- Front bezel: Black
- Rear cover: Black
- Foot: Black
- Finish: Texture



Issue date 2021-08-20

Version: 3.2.1

12 NC: 8670 001 76155
EAN: 87 12581 77732 6

© 2021 Koninklijke Philips N.V.
All Rights reserved.

Specifications are subject to change without notice.
Trademarks are the property of Koninklijke Philips N.V.
or their respective owners.

www.philips.com

* Radius of the arc of the display curvature in mm
* The maximum resolution works for DP input only.

* Response time value equal to SmartResponse

* BT. 709 / DCI-P3 Coverage based on CIE1976

* NTSC Area based on CIE1976

* sRGB Area based on CIE1976

* Adobe RGB Coverage based on CIE1976

* Activities such as screen sharing, on-line streaming video and audio over the Internet can impact your network performance. Your hardware, network bandwidth and its performance will determine overall audio and video quality.

* EPEAT rating is valid only where Philips registers the product. Please visit <https://www.epeat.net/> for registration status in your country.

* The monitor may look different from feature images.