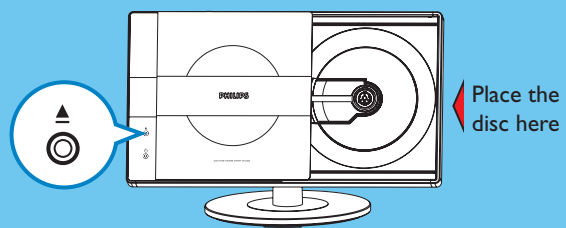


3 Enjoy

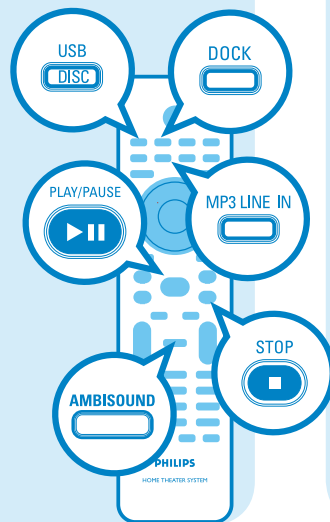
Start disc playback

- 1 Press **▲** to open the disc compartment.



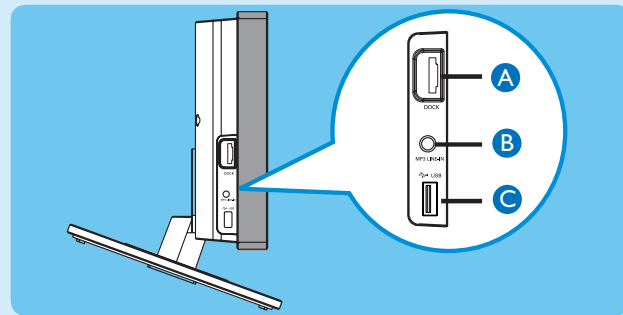
- 2 Place a disc with the disc label facing towards you.
- 3 Press **▲** to close the disc compartment.
- 4 Playback starts automatically.
- 5 If the disc menu appears on the TV, use cursor keys to select an option in the menu and press **OK** to start playback.
- 6 Press **■** to stop playback.

Note When you press **▶||** button, playback resumes from where it last stopped. To start playback from the beginning, you have to press **◀◀◀**.



Playback other supported devices

The connections to other devices are located at the left side of the main unit.



Apple iPod

- 1 Connect the Philips HTD7001 docking station to **A**.
- 2 Turn on your iPod before you dock it into the correct cradle.
- 3 Press **DOCK** to switch to 'DOCK' mode.
- 4 Press **PLAY** on your iPod.

Note Refer to the accompanying user manual or HTD7001 user manual for more information on video/picture playback.

Other portable audio player

- 1 Use the supplied MP3 LINE-IN cable to connect the headphone output jack on your portable audio player to **B**.
- 2 Press **PLAY** on your portable audio player.
- 3 Press **MP3 LINE-IN** to listen to the playback.

USB device

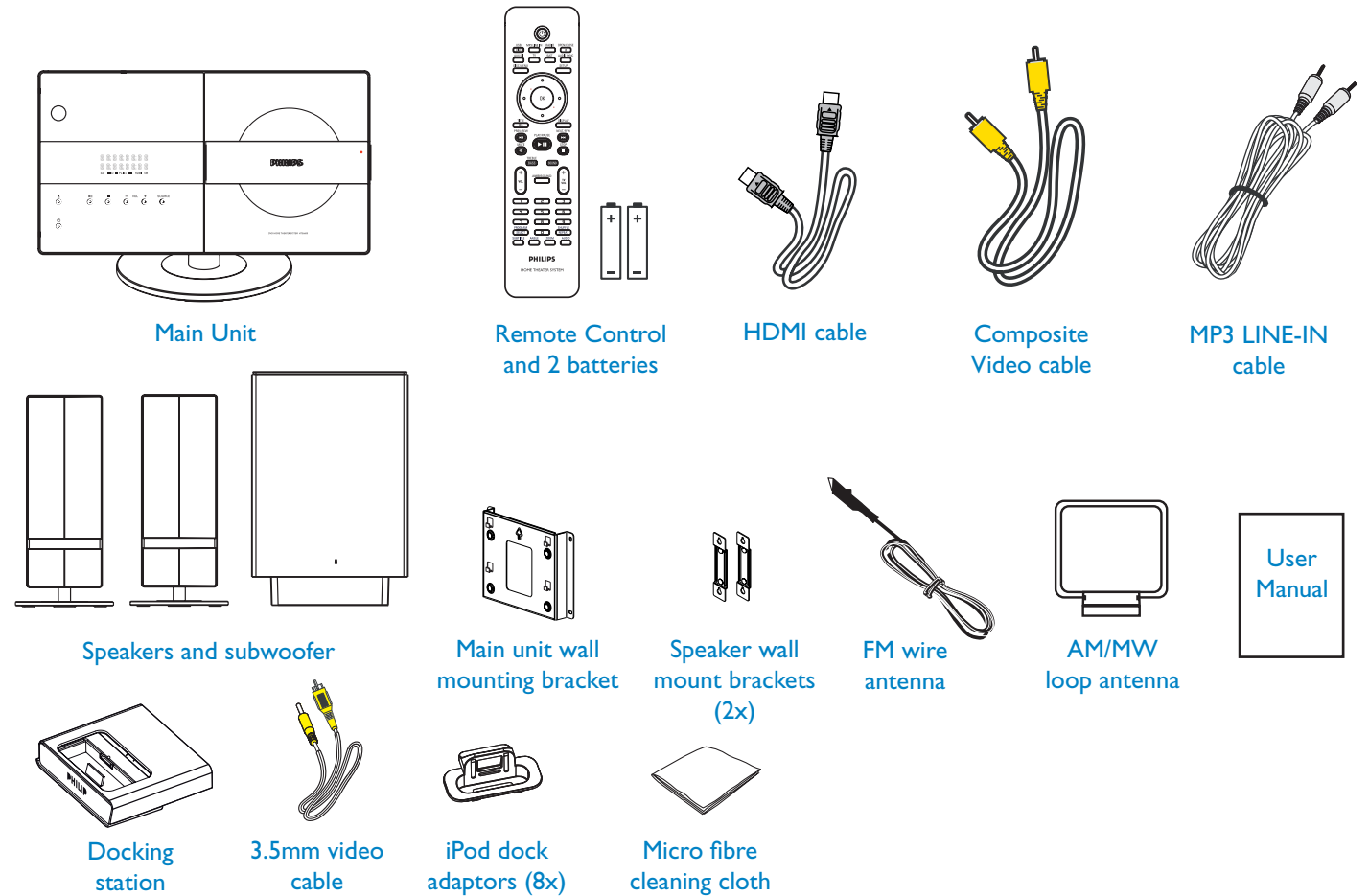
- 1 Insert your USB device to **C**.
- 2 Press **DISC/USB** to switch to 'USB' mode.
- 3 Press **▶||** to start playback.
- 4 To stop playback, press **DISC/USB** to switch to 'DISC' mode. You can unplug your USB device now.

Quick Start Guide



- 1 Connect
- 2 Set up
- 3 Enjoy

What's in the box?



Need help?

User Manual
See the user manual that came with your Philips DVD Home Theater System.

Online
Go to www.philips.com/usasupport

Hotline
Call 1-888-PHILIPS (1-888-744-5477) for our operators.

Be responsible
Respect copyrights

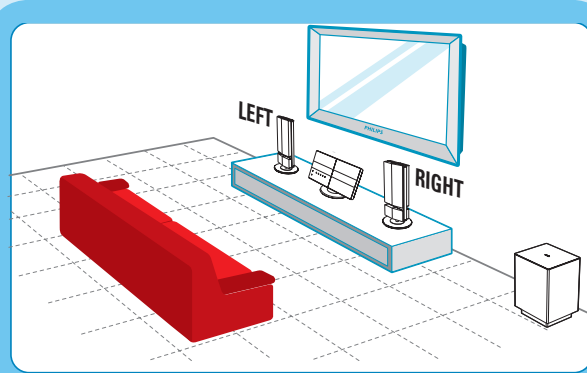
 2007 © Philips Consumer Electronics
A Division of Philips Electronics North America Corp
P.O. Box 671539 Marietta, GA 30006 0026
All rights reserved.
Printed in China
12 NC 3139 245 25623

PHILIPS

1 Connect

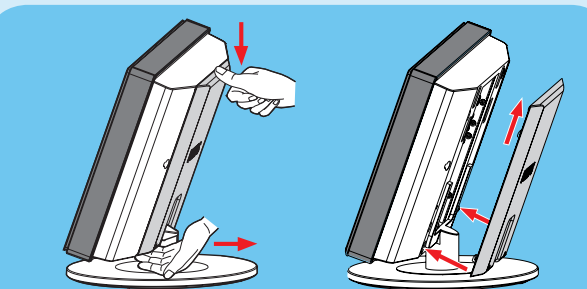
A Placement

Proper speakers system placement is important to ensure optimum sound performance.



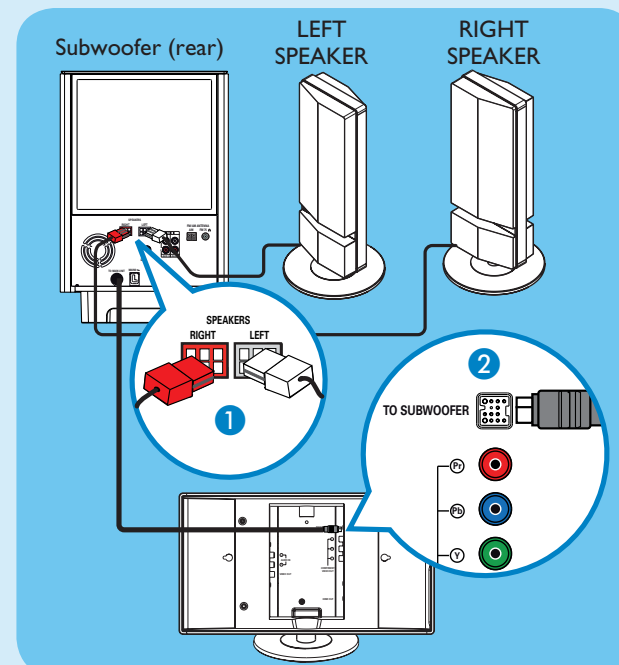
- 1 Place the speakers at the normal listening ear level, equal distance from the TV and face it straight ahead towards the listening area.
- 2 Place the subwoofer on the floor, at least one meter away from the TV.

B Remove rear cover from main unit



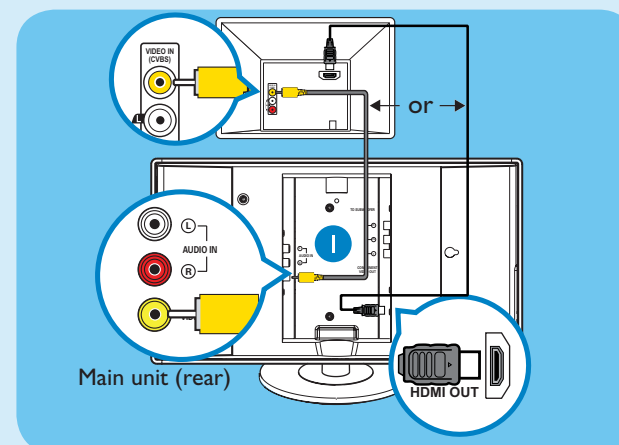
- 1 Carefully push down the rear cover from the top and detach it from the main unit.
- 2 After all the connections have been made (see the following sections for details,) close the rear cover by fitting the catches into the holes and pushing upwards.

C Connect the speakers and main unit to subwoofer



- 1 Connect the left speaker to the SPEAKER LEFT jack and the right speaker to the SPEAKER RIGHT jack at the rear of the subwoofer.
- 2 Connect the TO MAIN UNIT cable from the subwoofer to the TO SUBWOOFER jack at the rear of the main unit.

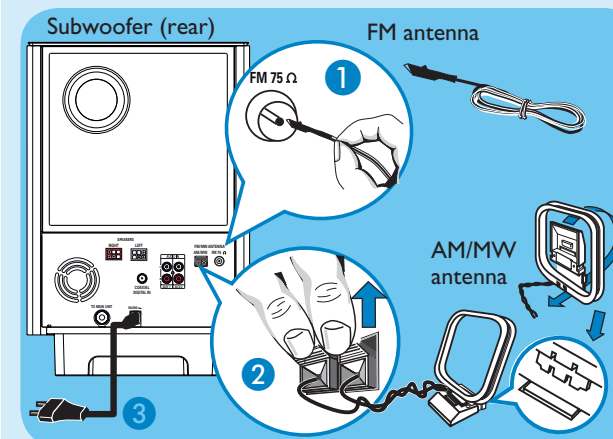
D Connect the main unit to TV



- Connect a composite video cable (supplied) from the VIDEO OUT jack on main unit to the VIDEO IN jack on your TV.
- If your TV supports HDMI, connect the HDMI cable from the HDMI OUT to the HDMI IN jack on your TV.

E Connect the radio antennas and power cable

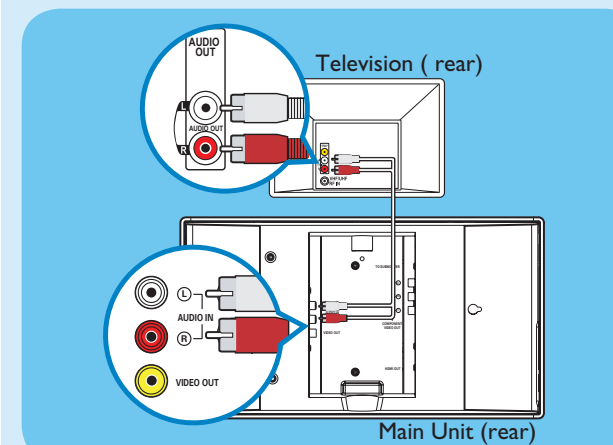
Keep the antennas away from the electronic devices to prevent unwanted interference.



- 1 Connect the FM antenna to the inner pin of the FM 75 Ω jack. Extend the antenna for optimum reception.
- 2 Unfold the AM/MW loop antenna and fix the claw into the slot. Push the tabs and insert the wires into the AM/MW jacks.
- 3 Connect the power cable from subwoofer to the AC power outlet.

F Connect audio output from TV (optional)

To hear the TV audio through this home theater system, use the red and white audio cables (not supplied) to connect the AUDIO IN jacks on the main unit to the AUDIO OUT jacks on your TV.



Note Press **TV** on the remote control to get the sound output from the speakers system when watching the TV program.

2 Set up

A Finding the viewing channel

- 1 Press **⏻** (STANDBY ON) on the main unit to turn it on.
- 2 Turn on the TV. Use the TV's remote control to select the correct viewing channel.

Note To search for the correct viewing channel, press the Channel Down button on the TV's remote control repeatedly (or AV, SELECT, **⏻** button) until you see the Video In channel. If you are using a RF modulator, set the TV to channel 3 or 4.

B Setting up the speakers

When you turn on this unit for the first time, the speaker setup message appears on the TV.

- 1 Press **SETUP** on the remote control to enter 'General Setup Page.'
- 2 Press cursor down to highlight { **Ambisound Setup** } followed by pressing cursor right key.
- 3 Select one of the options below and press cursor right key.

{ Room Acoustics }

{ Hard } - for concrete or wooden walls.
{ Soft } - for curtains or an open space.

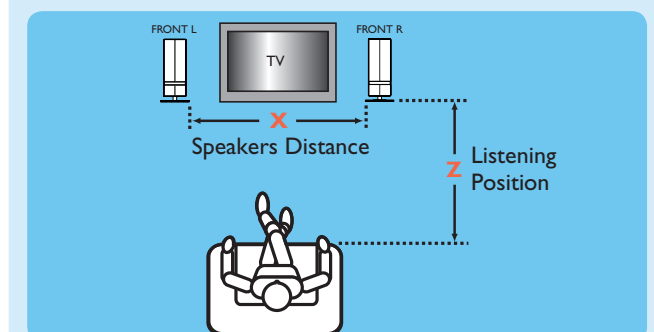
{ Speakers Distance }

{ Near } - 'X' is less than 1.2 meters (3.9 ft)
{ Default } - 'X' is between 1.2~2 meters (3.9~6.5 ft)
{ Far } - 'X' is more than 2 meters (6.5 ft)

{ Listening Position }

{ Near } - 'Z' is less than 2 meters (6.5 ft)
{ Default } - 'Z' is between 2~3 meters (6.5~9.8 ft)
{ Far } - 'Z' is more than 3 meters (9.8 ft)

Note The underlined options are the default setting.



- 4 Select a most suitable predefined setting and press **OK** to confirm.
- 5 Once complete, press **SETUP** to exit the menu.

Note Refer to the accompanying user manual for other setup options.